

# Cuban Evangelism

November 18, 2015

Dear Friends,

## Cuba

As you are no doubt aware from following the news reports, Cuba continues to unfold. Carnival Cruise Lines has recently announced that they will have four cruise ships visiting Havana on a weekly basis within the next six months. Several air lines, principally United, have announced that daily flights from Houston to Havana will be available within a six months period.

All of this is part of the relaxation of travel restraints that have been in place for fifty years. More than ever we have a chance to affect a change in people's lives. Seldom in one's lifetime does such an opportunity present itself.

## New Divisions of Administration

During the recent SQI Latin American Convention held October 22<sup>nd</sup> and 23<sup>rd</sup> in Leon, Guanajuato, Mexico, it was announced that the SQI Missions Outreach in the Western Hemisphere would be divided into three Areas of Influence with an Executive Superintendent over each area.

### South America

SQI is pleased to introduce Rev. Jesus Esquivel of Oklahoma City, OK, who will serve as Executive Superintendent for this area. He will have the responsibility of overseeing the development of SQI in each of the South American countries.

Rev. Esquivel recently lead a team of Bible teachers to the Peruvian Amazon River region. He is returning to the same area in February , 2016, where a teaching team will conduct two weeks of Bible training to more than eighty ministers; some of whom will have come eight days up the Amazon River to attend.

A third teaching seminar on the Amazon is scheduled for August, 2016. Also, in February, 2016, Rev. Esquivel will dedicate the new SQI church property and congregation in Santa Marta, Colombia.

### Carribbean Area

The new Executive Superintendent for Cuba and the Carribbean Islands

is Rev. Enrique Mosqueda of Oklahoma City, OK. Rev. Mosqueda will be returning to Cuba in January, 2016, to oversee the continuing SQI growth and development of our Cuban labor. He is establishing the administrative outreach in Cuba so that our work may continue unabated in that land. His responsibility also includes all the islands of the Carribean, and we have already received inquiries from Haiti.

#### Central America

The new Executive Superintendent for Mexico and all of Central America is Rev. Jesus Teran of Leon, Guanajuato, MX. Rev. Teran has served for eight years as President of SQI's sister organization, En Busca del Espiritu, in Mexico. Now, his responsibility is to grow SQI throughout Central America. As of this writing, Rev. Teran is in Nacaome, Honduras for a meeting of pastors who have expressed a desire to unite with SQI.

Please keep us in your hearts and prayers, that SQI may be worthy of such a trust.

#### Personal Note

We are so pleased to have capable, dedicated administrators willing to accept the challenge of effecting the growth of these endeavors for Jesus Christ. Dividing the work load in such a manner allows us to now concentrate on establishing new areas in other parts of the world. We are only allotted so much time to work for Him, and we must use very moment.

Thank you to all our partners who have helped, and continue to help, to spread the message of Jesus Christ.

We are amazed and thankful for all the new areas that GOD has opened for our ministry. The opportunities HE has presented only echo his vision in Mark 16:15, "Go ye into all the world and preach the gospel . . . "

Yours in Christ,

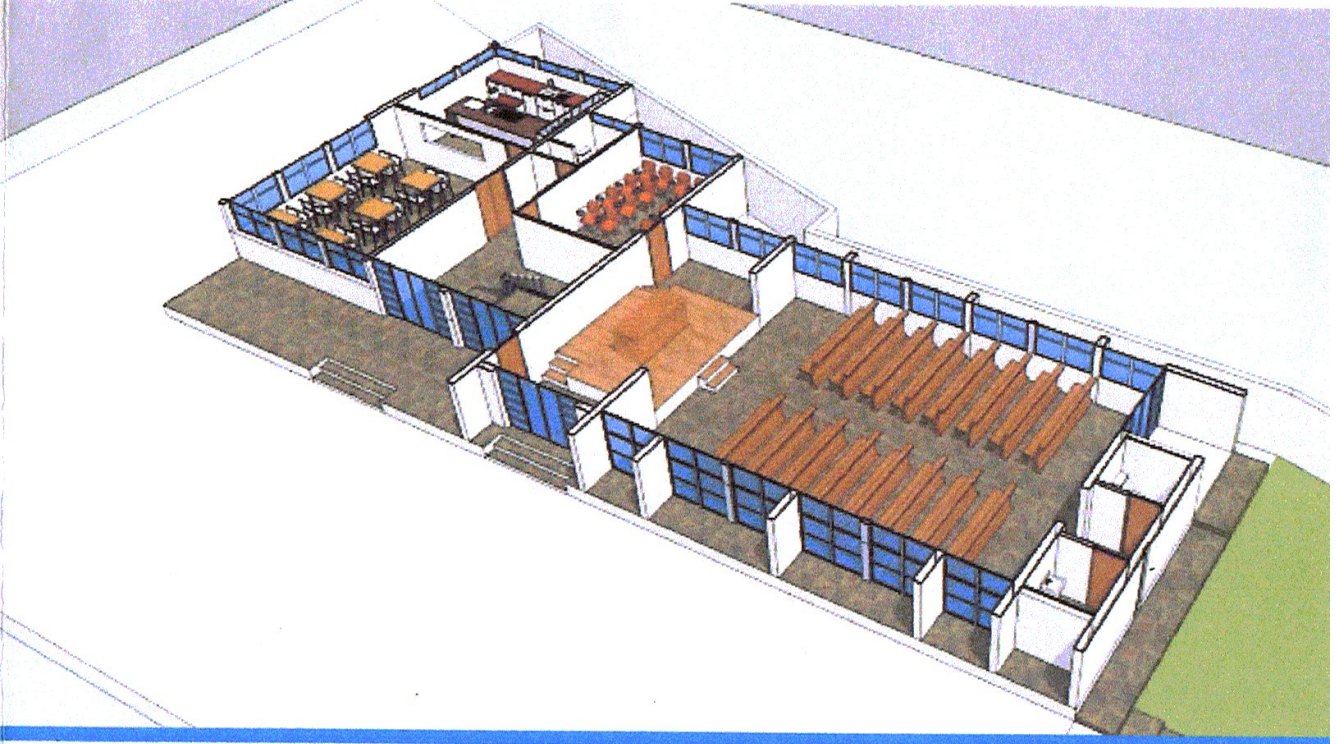


Bradley O. Brauser, President & Founder  
Spirit Quest International

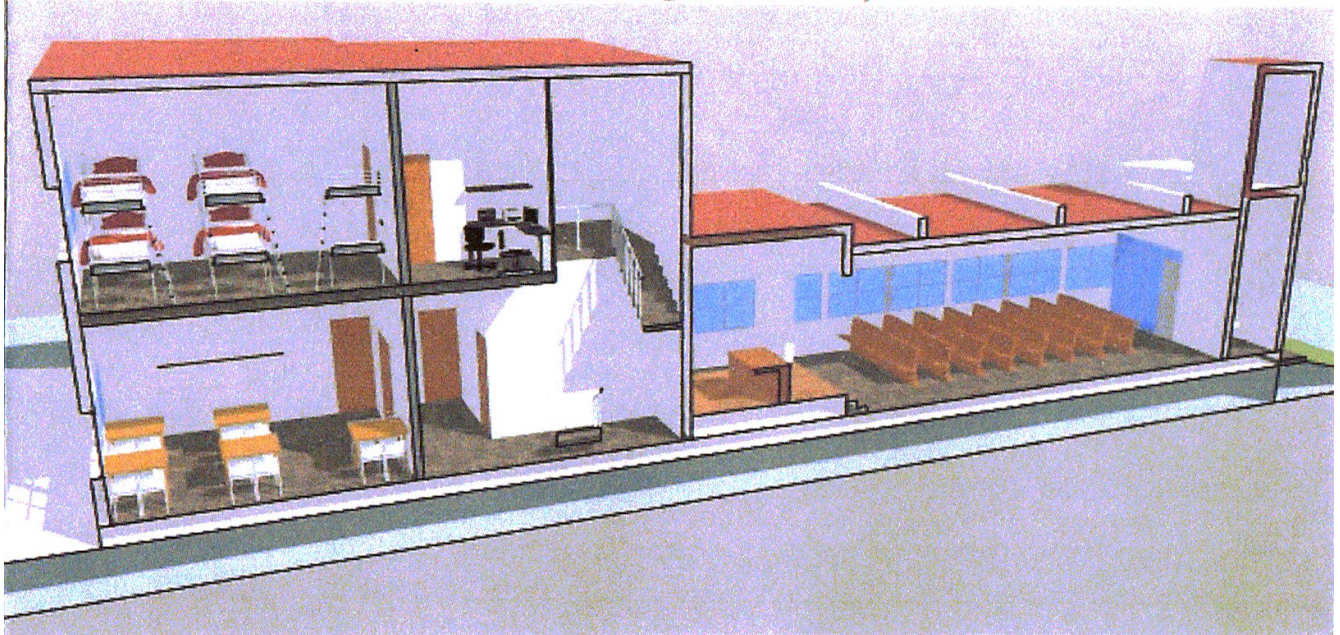
BB:ab



## PLANTA BAJA (Perspectiva de Planta de Mobiliario)



## CORTES (Perspectivado Longitudinal)



**Phase One** is nearing completion. When completed, it will contain a dining, sleeping, and classroom areas.



from Cuba(4)

Susell Hernández

Feb 23 at 7:24 PM

To me

Beloved Bishop, we have many necessities in each one of our Churches, but our priority is to finish the construction of the temple and training center here in Havana, this will be the national sit. Beside the temple the project includes rooms, bathrooms, classrooms, dinner room and offices with the purpose to gather many Pastors from all the country frequently, so they can receive capacitation, and support so they will be prepared to carry on with the work in their churches.

Pr Alien Rojas

Details :

Phase I

Endosure and roof of the temple \$ 2000cuc

Phase II

Finishing of the construction of the temple : \$2500 cuc

Phase III

Building of the training center : \$ 5000 cuc

Phase IIII

Furniture and equipment : \$6000 cuc

**Key:**

**1 cuc =**

**\$1 U.S.**

**In March** our funds were redirected from construction to training of ministers.

**In October** our funds were refocused on providing a central location for teaching.

from cuba ,report

Susell Hernández <eugenio.hdez@infomed.sld.cu>

Nov 11 at 12:38 PM

To 'bradley brauser'

This message contains blocked images. [Show Images](#)

[Change this setting](#)

Dear Bishop Brauser, I hope you are fine. Here by I send you the report of Octubre and November : the income of this two month we used it to do some repairing Works and to finish the fence-wall of our temple in Vedado(the future training center). I send you pictures of this. I want to use the incomes of December to buy mattress, so the Pastor that come frequently for meetings ,seminaries have a bed to sleep.

Recivie a big hug from your son in Cuba

Alien

---

Este mensaje no contiene virus ni malware porque la protección de avast! Antivirus está activa.

<https://www.avast.com/antivirus>